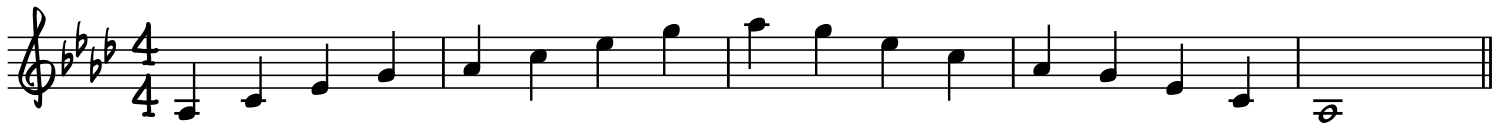


Bebop, základní cvičení

MODEL $A\flat\Delta$



chromatický tón zespoda



chromatický tón zezhora



diatonický tón zespoda



diatonický tón zvrchu



Kombinace: chrom. zespodu a chrom. zvrchu



Kombinace: chrom. zvrchhu a chrom zespod...



Kombinace: diat. zvrchu a chrom. zespod



35 Lze další kombinace: Diat. zespod a chrom zvrchu Chrom. zvrchu a diat. zespod chrom zespod a diat. zvrchu

dvě noty - chrom. zvrchu i zespod



46 obdobně: kombinace dvě noty: chrom zespod a zvrchu kombinace diatonické i chromatické.....

Tři noty - chrom. zvrchu a dvě zespod

Musical notation on a single staff, key signature of three flats (B-flat, E-flat, A-flat). It shows a chromatic ascent of three eighth notes (B-flat, B-natural, C) followed by a descending eighth-note scale (C, B, A, G, F, E, D, C).

52

Musical notation on a single staff, key signature of three flats. It shows a descending eighth-note scale (C, B, A, G, F, E, D, C) followed by an ascending eighth-note scale (C, D, E, F, G, A, B, C).

jedna zespod a dvě zvrchu

56 další kombinace: dvě zvrchu a jedna zespod

Musical notation on a single staff, key signature of three flats. It shows an ascending eighth-note scale (C, D, E, F, G, A, B, C) followed by a descending eighth-note scale (C, B, A, G, F, E, D, C).

dvě zespod a jedna zvrchu

Čtyři noty: dvě zvrchu a dvě zespod

Musical notation on a single staff, key signature of three flats. It shows an ascending eighth-note scale (C, D, E, F, G, A, B, C) followed by a descending eighth-note scale (C, B, A, G, F, E, D, C).

64

Musical notation on a single staff, key signature of three flats. It shows an ascending eighth-note scale (C, D, E, F, G, A, B, C) followed by a descending eighth-note scale (C, B, A, G, F, E, D, C).

68

Musical notation on a single staff, key signature of three flats. It shows an ascending eighth-note scale (C, D, E, F, G, A, B, C) followed by a descending eighth-note scale (C, B, A, G, F, E, D, C).

72

Musical notation on a single staff, key signature of three flats. It shows an ascending eighth-note scale (C, D, E, F, G, A, B, C) followed by a descending eighth-note scale (C, B, A, G, F, E, D, C).

76 A opačně na čtyři noty: dvě zespona a dvě zvrchu

Musical notation on a single staff, key signature of three flats. It shows a descending eighth-note scale (C, B, A, G, F, E, D, C) followed by an ascending eighth-note scale (C, D, E, F, G, A, B, C).

jiné rytmické přístupy... atd.

77

Musical notation on a single staff, key signature of three flats. It shows various rhythmic patterns for the four-note exercise, with some notes marked with a downward-pointing triangle (▼) to indicate accents or specific rhythms.

takto lze cvičit i stupnice

Musical notation on a single staff, key signature of three flats. It shows scale exercises for both ascending and descending directions, with notes marked with downward-pointing triangles (▼) for accents.

Vše lze pak hrát i dotenzí, tedy např.
dur maj - 1 - 3 - 5 - 7 - 9 - 13